

Position Statement from National Highways

Title:	M69 Closure Procedures
Reference:	TR050007
Applicant	Tritax Symmetry
Proposal	Application by Tritax Symmetry (Hinckley) Limited for an Order Granting Development Consent for the Hinckley National Rail Freight Interchange
Author	National Highways (20040073)
Date	14 November 2023

Introduction:

National Highways (“we”) has been appointed by the Secretary of State for Transport as strategic highway company under the provisions of the Infrastructure Act 2015 and is the highway authority, traffic authority and street authority for the Strategic Road Network (SRN). The SRN is a critical national asset and as such we work to ensure that it operates and is managed in the public interest, both in respect of current activities and needs as well as in providing effective stewardship of its long-term operation and integrity.

This position statement sets out our operational procedures which currently exist to manage an incident or closure of the M69 Motorway based on questions raised by the Examining Authority during Issue Specific Hearing 2 on Traffic and Transport.

Existing Operation for the management of incidents on the M69 Motorway:

National Highways currently has procedures which set out the procedures when the M69 is closed. This is in the form of diversions in place and associated signage which are displayed on the route cards which are provided in Annex A of this note.

In addition, National Highways had Variable Signage Strategy (VSS) for when incidents occur. The VSS strategy would be to warn road users of a closure prior to key decision points earlier in their journey, this would allow them to choose alternative routes where possible; the exact nature of our signing plan would depend on network conditions at that time. Our intention would be to encourage road users to use alternate routes where possible.

For incidents on the M69 Motorway it is likely that traffic on M1(S) would be warned of a closure of the M69(S) before M1 J28 and M1 J24, on the M1(N) before M1 J18, J19 and J20, Traffic on the M6(N) would be warned before M6 J1 and on the M6.

A northbound closure of the M69 would most likely be signed on the M40 and M42 NB, and on the M6 prior to J4 Southbound.

It should be noted that National Highways is also subject to a Key Performance Indicator (KPI) which requires us to have cleared more than 86% of lane compromising incidents within 60 minutes of the incident occurring.

Enabling the Development Proposals and Incident Management:

National Highways notes that the development proposals and associated infrastructure will potentially lead to amendments to these existing arrangements,

We will proactively continue to work with the applicant's consultants and the Local Highway Authorities about the M69 Junction 2 Improvements and the proposed A47 Link Road and the potential benefits this provides for the review of diversion routes and ensure they are identified on any new signage in accordance with The Traffic Signs Manual Chapter 8 paragraph D3.15.22 which states.

'Wherever possible, symbolic signing along the diversion routes should be incorporated into existing directional signing, following the design rules set out in Chapter 7 (paragraph 11.4). When it is necessary to use additional separate signs, diagram 2703 and its prescribed variants (see the working drawing P2703) should be used. When temporary patches are used, they shall be capable of removal without damaging the sign face and they shall be removed at the end of the works. All diversion routes shall be agreed in advance with the Highway Authority and the police.'

Furthermore, we understand from discussions with the applicants that a proposed emergency plan will be submitted as part of their deadline 3 submissions.

Summary:

National Highways trusts that this note provides clarity to the examining authority regarding our current operations to manage incidents and closures on the M69 Motorway. In addition, we continue to work proactively with the applicant and the Local Highway Authorities through the development of the scheme and the forthcoming emergency plan.


ANNEX A:

M69 Emergency Diversion Route Cards




BLANK PAGE



M69/N/7/01

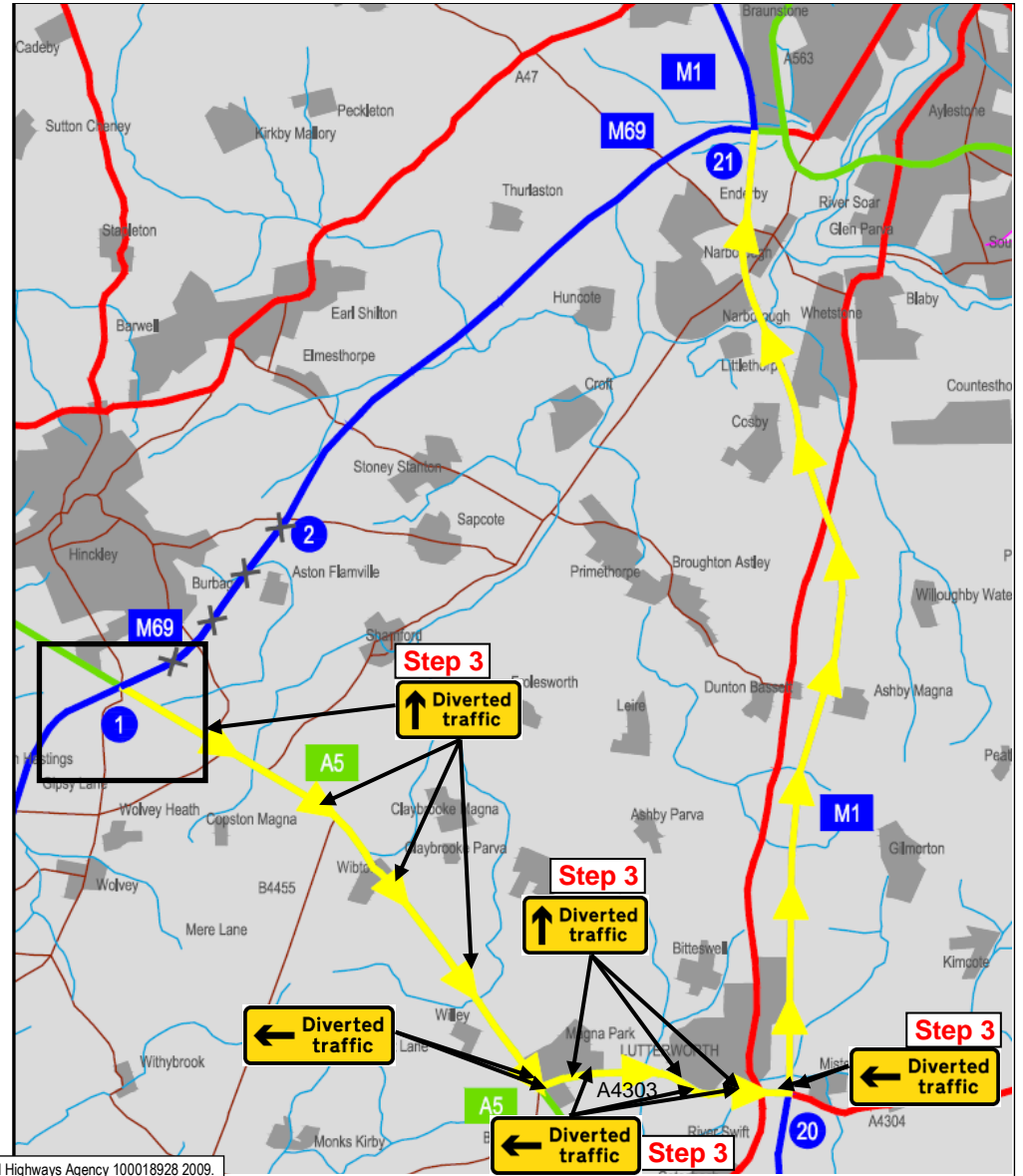
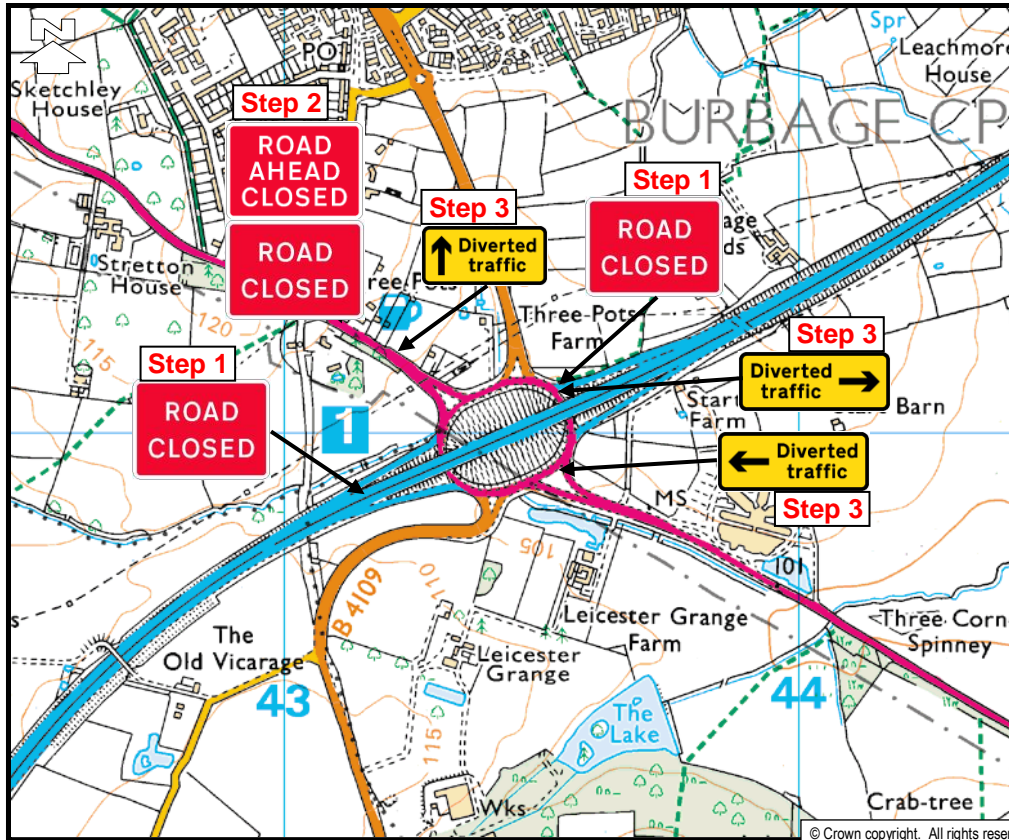
M69, JUNCTION 1 (A5) – JUNCTION 2 N/B CLOSURE

Diversion Route Symbol: 

Temporary signs required to be held on IRR vehicle:

 8 no.	 1 no.	 2 no.	
 8 no.	 1 no.		

Closed road 
 Diversion route 
 Route length 43.3 Km
 Gritting requirements
 Tonnage 6.1 tonnes
 Route time 54 mins



The following parties agreed this route as the preferred option:
 Highways England Area 7 EMAD, Leicestershire County Council, Leicestershire Police



Drg No: 100030/01/M69/01
 Date: Nov 2019
 Rev. 1

ROUTE DESCRIPTION:

Exit the M69 at Junction 1 and take the third exit (right) onto the A5 south/eastbound. Continue along the A5 southbound for approximately 10.3kms to the A5/A4303 Cross in Hand Roundabout. At the roundabout take the first exit (left) onto the A4303 eastbound. Continue eastbound along the A4303 passing through the roundabouts at Magna Park and Coventry Road to the A5/A426 Lutterworth Road/Rugby Road Roundabout. At the roundabout take the second exit (straight ahead) and continue eastbound along the A4303 to M1 Junction 20. At M1 Junction 20 take the first exit(left) onto the M1 northbound. Continue on the M1 Northbound for approximately 17.2km to M1 Junction 21.

OPERATIONAL INFORMATION:

Route suitable for all AIL's

For full carriageway closure also implement M69/S/7/02(see route card).

Route is not suitable for non-motorway traffic

Temporary signs to be removed to Incident Response Resource at close down

IMPLEMENTATION:

Step 1 – Place temporary signs including “ROAD CLOSED”, on the M69 northbound J1 at the point of closure and on the M69 J21 northbound entry slip road.

Step 2 – Place temporary signs including “ROAD AHEAD CLOSED” on the A5 eastbound approximately ¼ mile in advance of M69 J1.

Step 3 – Place temporary signs along the planned diversion route at appropriate locations for traffic to follow.

Step 4 – Activate VMS on M69 northbound prior to Junction 1

NB Please note that there are Flap Signs on the M69 Junction 1 northbound exit slip road and at the M69 J1 northbound entry slip road, however they are displaying the wrong symbol so **don't** activate for this closure.

RISKS:

- **Peak time congestion** on the A4303 around Lutterworth, M1 Junction 21 Leicester, M69 Junction 1 and the A5 around Hinckley.
- **Major Traffic Generators:**
Magna Park Industrial Estate off the A4303
Business Parks & Retail Parks (Fosse Park) off the M1 Junction 21
- **Signalised/Pedestrian Crossings**
A5/M69 Junction 1 Interchange
M69/M1 Junction 21 Interchange

CONTACTS:

Leicestershire County Council:

CLIA1, HM1

Leicestershire Police:

The following parties agreed this route as the preferred option:

Highways England Area 7 EMAD, Leicestershire County Council, Leicestershire Police



Drg No: **100030/01/M69/01**

Date: **Nov 2019**

Rev. 1

Diversion Route Symbol:



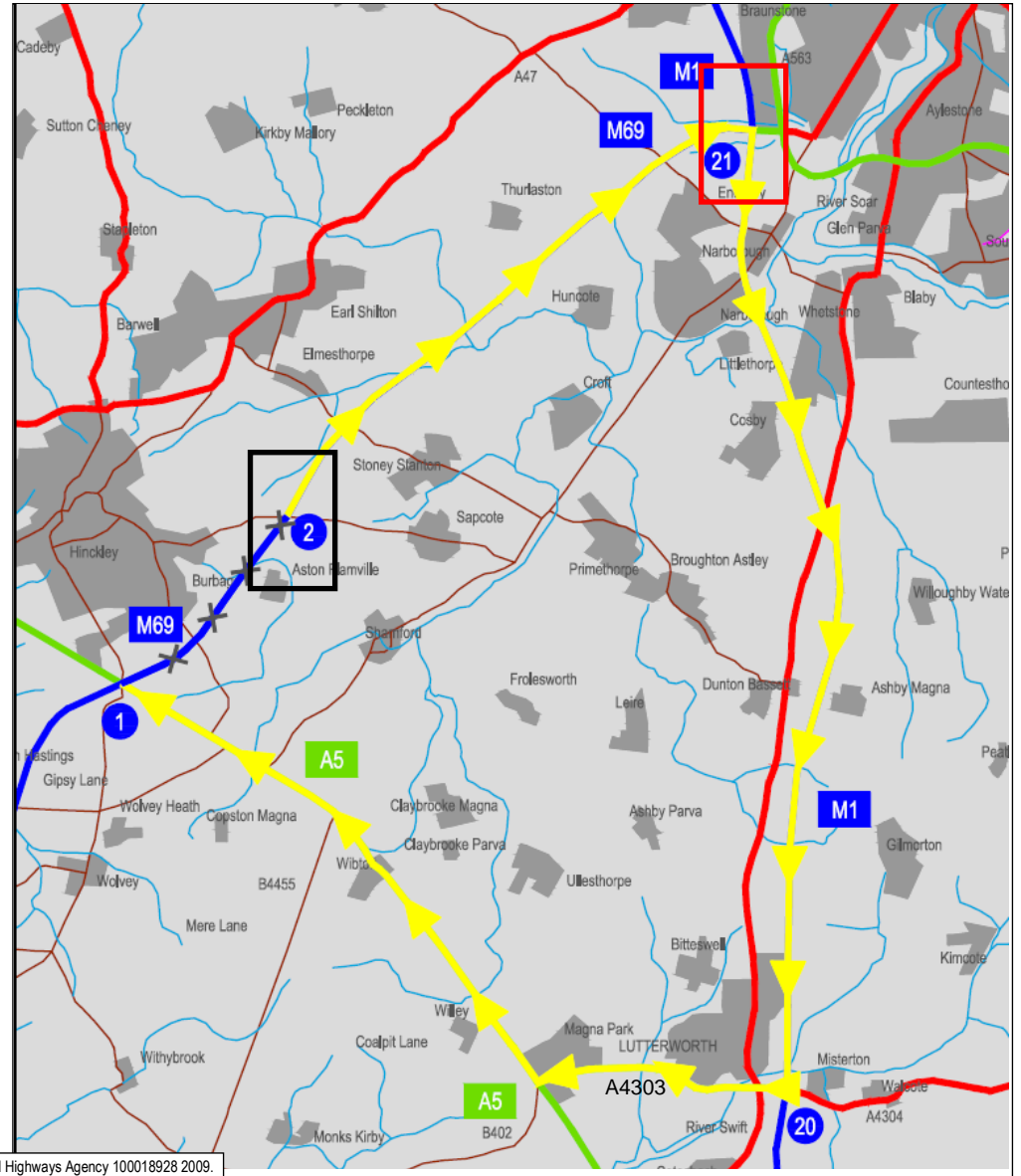
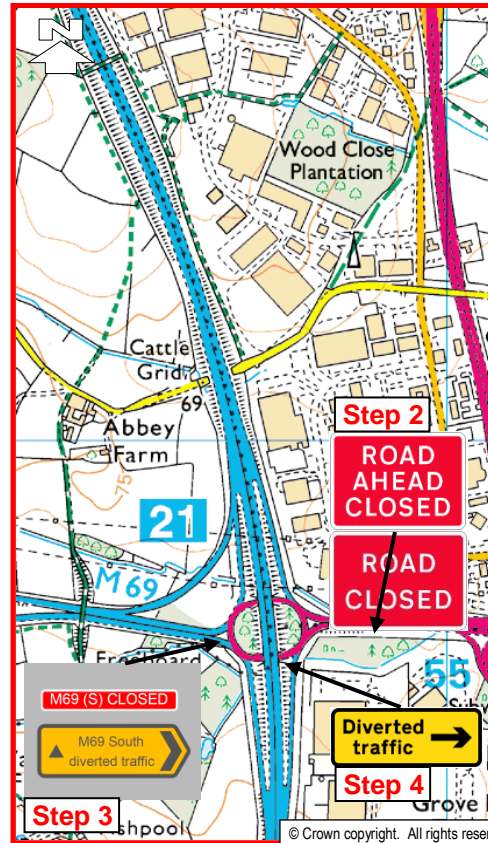
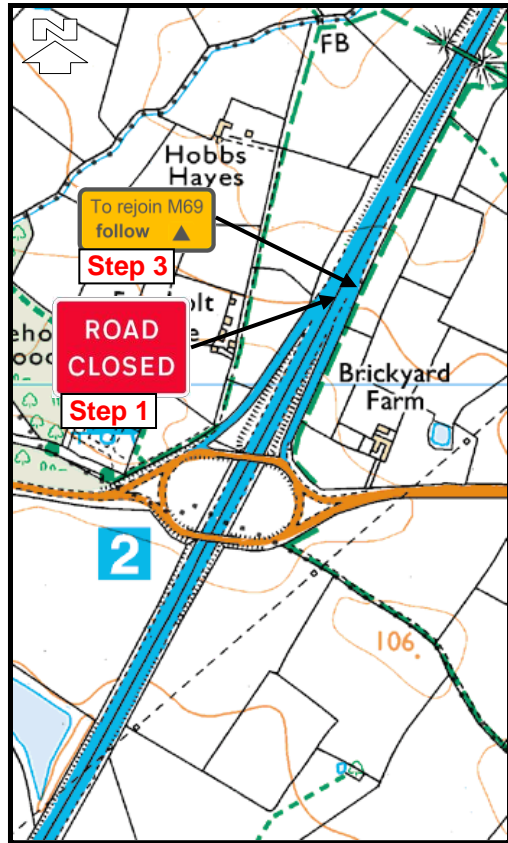
Temporary signs required to be held on IRR vehicle:



Closed road

Diversion route

Route length 44.7 Km
Route time 56 mins
Tonnage 6.3 tonnes
Gritting requirements



The following parties agreed this route as the preferred option:
 Highways England Area 7 EMAD, Leicestershire County Council, Leicestershire Police



Drg No: 100030/01/M69/02
 Date: Nov 2017
 Rev. 1

ROUTE DESCRIPTION:

(i) M69 Traffic from M1 Junction 21 – At M1 Junction 21 instead of leaving the Motorway continue southbound on the M1 for approximately 17.2 km to M1 Junction 20. Then, exit the M1 southbound at Junction 20 and take the third exist (west) onto the A4303. Continue along the A4303 to the A4303/A426 Lutterworth Road/Rugby Road Roundabout and then take the second exit from the roundabout. Continue westbound along the A4303 passing through a further two roundabouts at Coventry Road and Magna Park to A5/A4303 Cross in Hand Roundabout. Then take the fourth exit from the Roundabout and proceed north along the A5. Continue northbound along the A5 Waitling Street for approximately 10.3kms to the A5/M69 Junction 1 Interchange. At the Interchange take the second exit and rejoin the M69 southbound.

(ii) Trapped Traffic (southbound) on M69 between M1 Junction 21 and M69 Junction 2

Exit the M69 at Junction 2 and take the third exit at the junction back onto the M69 northbound. Continue back along the M69 northbound to M1 Junction 21. At M1 Junction 21 stay in the RHS lane and take the third exit at the junction onto the M1 southbound continue along the Diversion Route as (i) above

OPERATIONAL INFORMATION:

Route suitable for all ALL's

For full carriageway closure also implement M69/N/7/01 (see route card).

Temporary signs to be removed to Incident Response Resource at close down

IMPLEMENTATION:

Step 1 – Place temporary signs including “ROAD CLOSED”, on the M69 southbound J2 at the point of closure.

Step 2 – Place temporary signs including “ROAD AHEAD CLOSED” on the A5460 westbound approximately ¼ mile in advance of M1 J21.

Step 3 – Activate the Flap Sign on the M69 southbound exit from the M1 at Junction 21. Also activate the Flap Sign on the M69 Junction 2 southbound exit slip road.

Step 4 – Place temporary signs along the planned diversion route at appropriate locations for traffic to follow.

Step 5 – Activate VMS on M1 southbound prior to J21 to warn traffic of M69 closure.

NB Please note that there are Flap Signs on the M1 J21 southbound slip road southbound, however all are displaying the wrong symbol so **don't** activate for this closure.

RISKS:

- **Peak time congestion** on the A4303 around Lutterworth, M1 Junction 21 Leicester, M69 Junction 1 and the A5 around Hinckley.
- **Major Traffic Generators:**
Magna Park Industrial Estate off the A4303
Business Parks & Retail Parks (Fosse Park) off the M1 Junction 21
- **Signalised/Pedestrian Crossings**
A5/M69 Junction 1 Interchange
M69/M1 Junction 21 Interchange

CONTACTS:

Leicestershire County Council:

CLIA1, HM1

Leicestershire Police:

The following parties agreed this route as the preferred option:

Highways England Area 7 EMAD, Leicestershire County Council, Leicestershire Police



Drg No: **100030/01/M69/02**

Date: **Nov 2017**

Rev. 1